

Integrated Working Training Strategy Managers' Briefing

29 January 2008

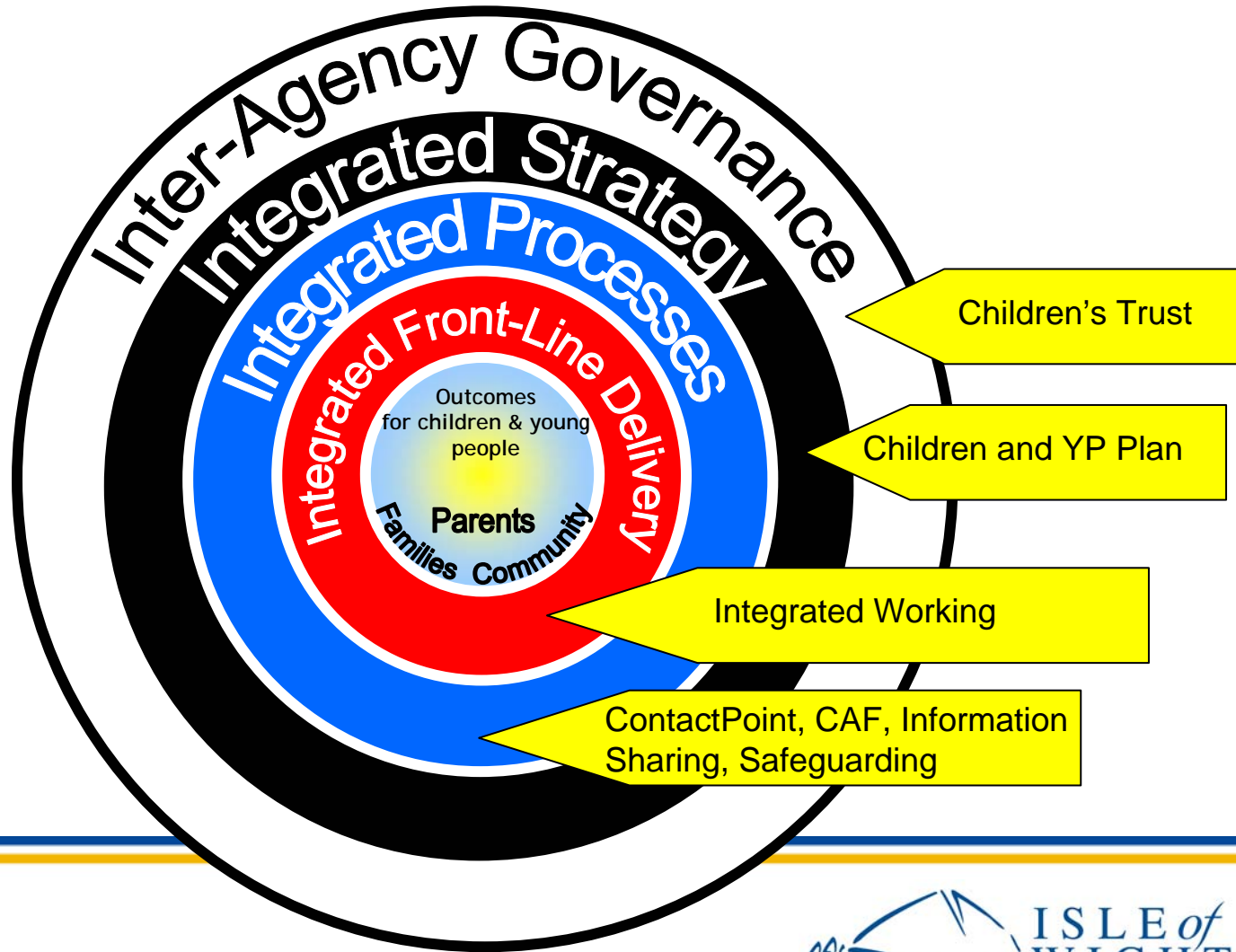


A key part of Every Child Matters



Outcomes:

- Be healthy
- Stay safe
- Enjoy and achieve
- Make a positive contribution
- Economic well-being



Integrated working is:

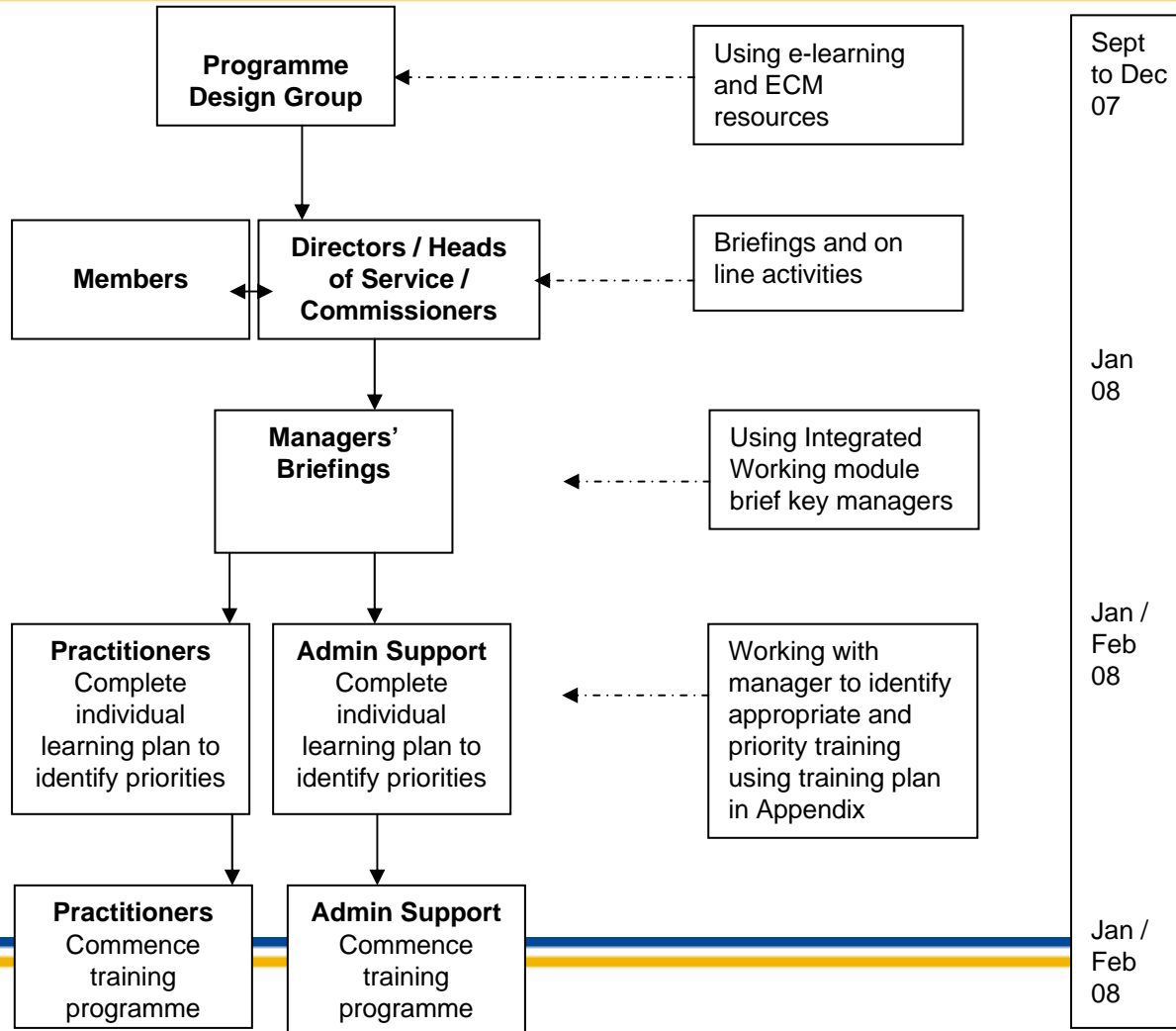
... everyone supporting children and young people working together effectively to put the child at the centre, meet their needs and improve their lives.

The Department for Children, Schools and Families (DCSF)
Children's Workforce Development Council (CWDC)

Benefits of an Integrated Working Training Programme

1. Supports the aims and development of a re-structured Children's Services.
2. Supports the development of integrated working.
3. Supports the aims and development of the Children's Trust, the LSCB and the delivery of the Children and Young People's Plan.
4. Supports integrated working by providing opportunities for multi-agency training.
5. Provides a common and shared standard of knowledge, skills and understanding for integrated working with Children's Services and between partner organisations.
6. Supports the duty to safeguard children
7. Has the potential to improve data quality through better understanding of the need for high quality recording.

Introduction to the Training Strategy



OVERALL TRAINING PLAN																									
Training	Time Commitment	2008												2009											
		Jan	Feb	Mar	Apr	May	June	July	Aug	Sep	Oct	Nov	Dec	Jan	Feb	Mar	Apr	May	June	July	Aug	Sep	Oct	Nov	Dec
Basic IT Competence		→																							
Integrated Working E-learning Modules																									
Integrated Working	1 hour		→																						
Information Sharing	1 hour		→																						
Common Assessment Framework (CAF)	1 hour		→																						
Safeguarding	1 hour		→																						
Recording	1 day		→																						
Integrated Children's System (ICS)	4 - 7 days							→																	
ContactPoint	1/2 day																								
Integrated Working in Practice Modules																									
Integrated Working in Practice on the Isle of Wight	1 day									→															
Information Sharing	1/2 day									→															
Common Assessment Framework (CAF)	1/2 - 1 day									→															
Safeguarding	2 days	→																							



Common Assessment Framework

Log in

Please use the form below to log in:

Username:

Password:



Common Assessment Framework



Course Menu

- Background
- Vision and Aims
- What is the CAF?
- Key Principles
- When to Assess
- How to Assess
- Lead Professional
- Information Sharing
- Doing It Well
- Case Studies
- Further Information
- Quiz

Powered by **kwango**



ramework



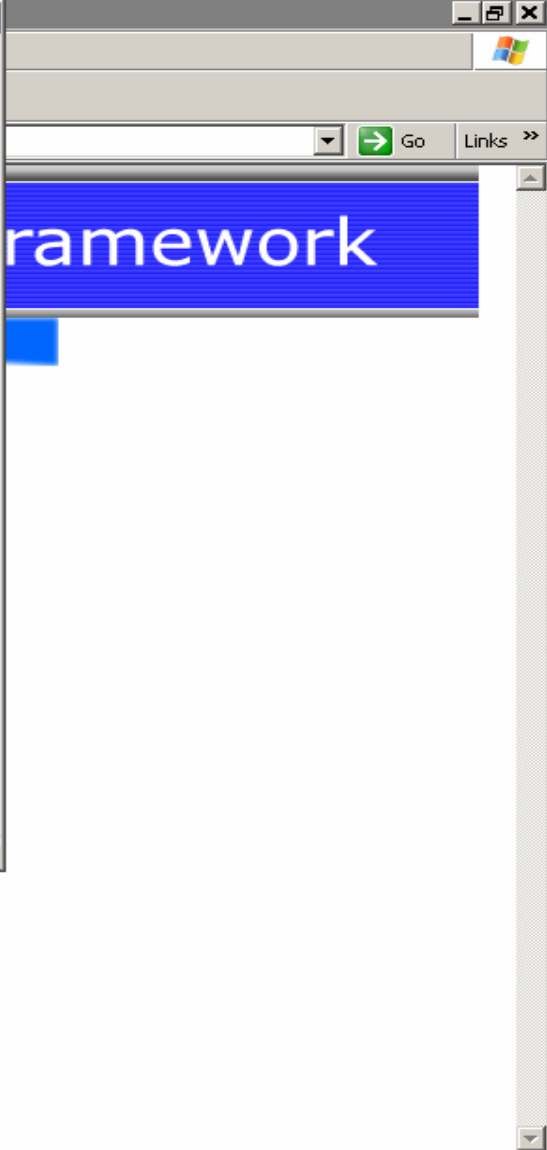
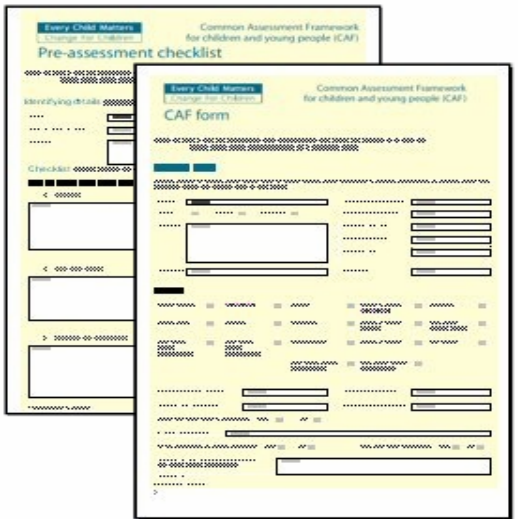
What is the CAF?

Elements of the Common Assessment Framework

There are three elements to the CAF:

- A Pre-assessment checklist. Practitioners use this to make an initial judgement about whether the child is making satisfactory progress and to help understand if there are unmet needs
- The Common Assessment process. This gathers all the information needed to gain an accurate picture of the child's needs and strengths
- The CAF form. This provides a consistent way to record the Common Assessment discussion and outcomes and to share information

See the Further Information section of this guide to download copies of the DfES checklist and form.



Case Studies

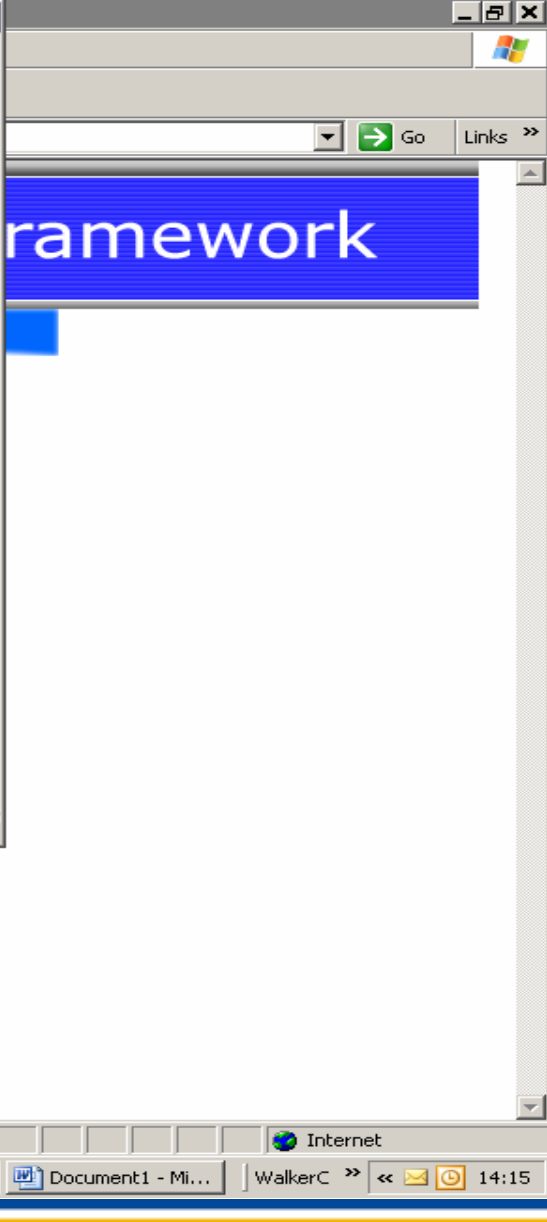
Case Study 1

Millie, (three and a half years old), has a rare syndrome leading to physical developmental delay. She gets very frustrated, sometimes screaming and self harming, and she doesn't sleep well.

She needs 24 hour care from her single Mum, Trish.

Her new health visitor, Meena, is visiting.

Read or listen to the conversation by pressing the Play button opposite.



Common Assessment Framework



Question 1

Jacob, (aged 12), uses a wheelchair. He attends mainstream education where he has a support worker. He is in quite good health and has been progressing well in education. This year his behaviour has become very challenging both at home and at school. Mum reports that they are 'at their wits end'.

Check Answer

Yes

No

Powered by **kwango**



ramework



Where to Access

Children's Services Library Study Area

Thompson House Training Room – Fridays only

County Hall

Children Service Centre

Connexions

Children's Centres

Youth Centres

Ryde Town Hall

Work Station

Home PC

When to Access

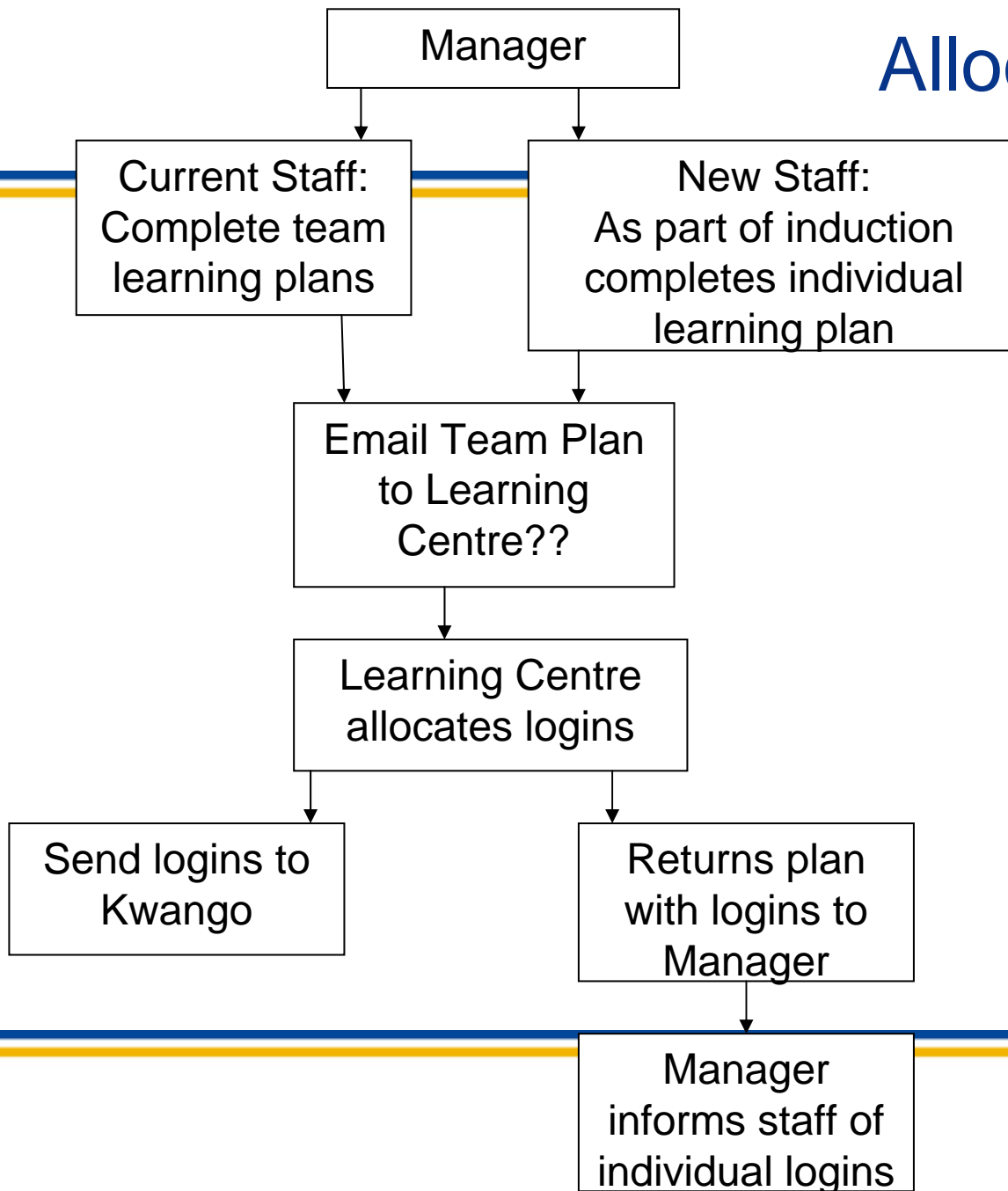
- Flexibility is key
- Times are allocated and recorded on individual and team plans
- Manager's discretion on how and when staff are enabled to undertake E learning

Manager's responsibilities

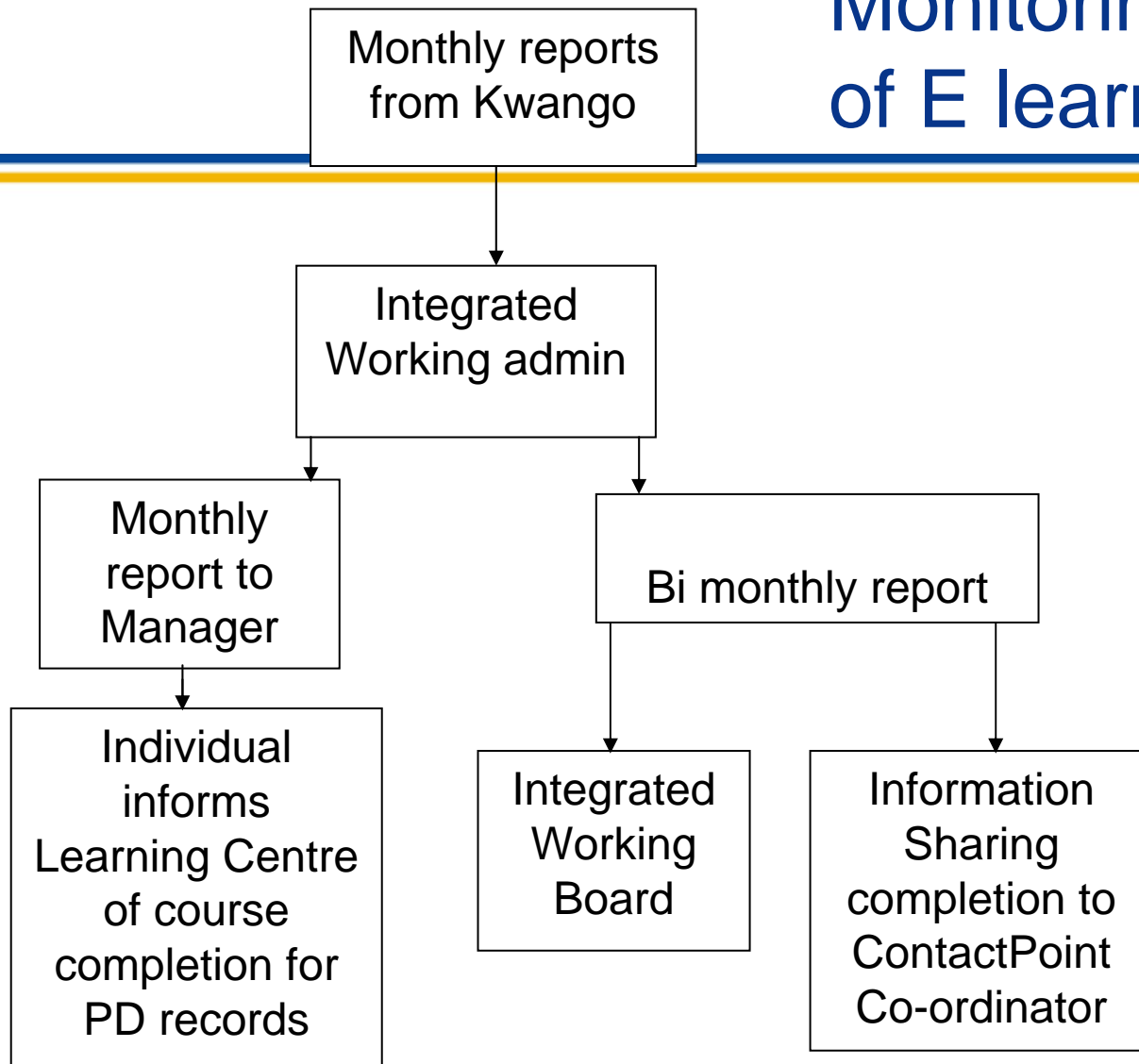
- Brief team
- Complete team and individual plans
- Submit team plan by Friday, 29 February
- Support staff in accessing E learning
- Monitor take up

Team:		Team members and scheduling of training								
Training	Time Commitment									
Logins										
Basic IT Competence										
Integrated Working E-learning Modules										
Integrated Working	1 hour									
Information Sharing	1 hour									
Common Assessment Framework (CAF)	1 hour									
Safeguarding	1 hour									
Recording										
Integrated Children's System (ICS)										
ContactPoint	1/2 day									
Identity Check completed (date)										
Enhanced CRB completed (date)										
Integrated Working in Practice Modules										
Integrated Working in Practice on the Isle of Wight	1 day									
Information Sharing	1/2 day									
Common Assessment Framework (CAF)	1/2 - 1 day									
Safeguarding	2 days									

Allocating Log ins



Monitoring completion of E learning





Integrated Working Resource Pack



Useful links

http://www.iwight.com/council/departments/childrens_services/integrated_working/

<http://www.everychildmatters.gov.uk/deliveringservices/integratedworking/>

<http://www.cwdcouncil.org.uk/projects/integratedworking.htm>

