

# Education, Employment & Training Opportunities Weekly 07.08.2017

(The next issue will be available 18.08.2017)

Tel: 01983 823888

Email: [island.futures@iow.gov.uk](mailto:island.futures@iow.gov.uk)

Website: [www.iwight.com/islandfutures](http://www.iwight.com/islandfutures)

Facebook: [www.facebook.com/islandfutures](http://www.facebook.com/islandfutures)

Twitter: [www.twitter.com/IslandFutures](http://www.twitter.com/IslandFutures)



Follow us on Twitter

Call us on 01983 823888 to book an appointment at any of the following locations or drop in to see an Adviser!!

## Tuesdays

2pm to 4pm at Lord Louis Library, Newport

## Fridays

2pm to 4pm at Ryde Library

## LOCAL JOB VACANCIES

### LOCATION: ARRETON

**The Dairyman's Daughter**

**Source:** County Press

Vacancy for part time **Kitchen Porter** for the summer season and **Front of House** staff. Previous experience preferred. Seasonal hours including weekends and bank holidays.

To apply send your current CV to [info@arretonbarns.co.uk](mailto:info@arretonbarns.co.uk)

# LOCATION: COWES

<b>Bar and Waiting Team Members</b>	<b>The Coast Bar &amp; Dining Room</b>	<b>Source:</b> Isle of Wight Jobs
We are looking for fun loving, dedicated personalities with a passion for food, drink and quality service. The ideal candidates will have experience in a similar role and be eager to learn and develop their skills as well as showing reliability and a true passion for what they do.		
<b>To apply please send CV and a short cover letter to: <a href="mailto:enquiries@thecoastbar.co.uk">enquiries@thecoastbar.co.uk</a> or pop in and have a chat with one of the team.</b>		

# LOCATION: RYDE

<b>Support Worker</b>	<b>The Regard Group</b>	<b>Source:</b> County Press
The Regard Group has a variety of Support Worker roles in our new Supported Living Service. Full and Part time hours are available, no experience is required but you will need basic literacy, numeracy and ICT skills. Weekend work will be required.		
<b>Email:</b> <a href="mailto:hazelwood@regard.co.uk">hazelwood@regard.co.uk</a> <b>Phone Alison Smith:</b> 01983 280039		

# LOCATION: SANDOWN

<b>Bedroom Cleaners</b>	<b>Sandringham Hotel</b>	<b>Source:</b> County Press
Full or part time work available, with an immediate start. Smart, friendly, flexible, customer focused applicants only. If you think you can make a difference to our team we would love to hear from you.		
<b>Telephone 01983 406655.</b>		

<b>General Café Assistant</b>	<b>Bear Cafe</b>	<b>Source:</b> County Press
This position would include some food preparation, washing up etc. A food hygiene certificate would be desirable but not essential. Working hours will include on day at the weekend		
<b>Please send CV to Mrs Nicky Case, The Bear Café, Dalverton Garden Centre, Newport Road, Sandown, IW, PO36 9PJ</b>		

# LOCATION: SHANKLIN

<b>Full-Time Waiting Staff</b>	<b>Ocean View Hotel</b>	<b>Source:</b> County Press
Ocean View Hotel has positions available for full-time waiting staff.		
<b>Email CV to:</b> <a href="mailto:oceanview@holdsworthhotel.co.uk">oceanview@holdsworthhotel.co.uk</a> <b>Call Reception:</b> 01983 863262 <b>Or collect an application form from the reception desk.</b>		

# LOCATION: SHANKLIN

<b>Cleaning Team Member</b>	<b>Parkdean Resorts- Lower Hyde and Landguard Holiday Park</b>	<b>Source: Isle of Wight Jobs</b>
		<b>Closing Date: 04/09/2017</b>
<p>We are looking for enthusiastic individuals with the right personality to be a part of our Accommodation Cleaning team at our Lower Hyde or Landguard Holiday Park. You will be required to clean accommodation, public areas, rooms and venues to the required specification, ensuring that all accommodation is presented to a high standard, and is ready at the expected time. Your hours will be 24 per week and ideally you will be flexible with your availability on days that you can work. No experience necessary, however you will need to have great attention to detail.</p>		
<b>To apply please visit <a href="http://www.isleofwightjobs.com">www.isleofwightjobs.com</a></b>		

# LOCATION: WOOTTON

<b>Care Assistant</b>	<b>Kite Hill Nursing Home</b>	<b>Source: County Press</b>
<p>Full and part time shifts available, the successful candidates will be self-motivated, caring and will gain satisfaction from meeting the needs and wishes of our clients. We offer full training and support to all our carers to achieve NVQ 2/ QCF in care.</p>		
<b>Email: <a href="mailto:kitehill@colvillecare.co.uk">kitehill@colvillecare.co.uk</a></b>		

<b>Care Assistant</b>	<b>Woodside Hall Nursing Home</b>	<b>Source: County Press</b>
<p>Required, full or part time, immediate start until October, 8am to 11.30am. Excellent rates of pay.</p>		
<b>Email: <a href="mailto:woodside@colvillecare.co.uk">woodside@colvillecare.co.uk</a></b>		
<b>Apply online: <a href="http://www.colvillecare.co.uk/careers">www.colvillecare.co.uk/careers</a></b>		

# APPRENTICESHIPS VACANCIES



## LOCATION: COWES

<b>Store Apprentice</b>	<b>Aldi</b>	<b>Wage:</b> £5.52 per hour to £8.02 per hour
<p>It's a really fast paced environment. The team is fairly small, so if you're not contributing it will soon show. And you get to learn something new every day in a company that thrives on being different. As someone who wants to get stuck in and make things happen, you'll find all that adds up to an exciting challenge. And since there's always loads of support from everyone around you, ranging from the management team to other store assistants, you'll never feel like you're struggling. Balancing theory with practical store work, you'll be expected to work hard and to put some real effort in each day. But it's very rewarding, the time will zoom by and the prospects for a brilliant future have probably never been better, with new Aldi stores opening all the time.</p>		
<p><b>For further details and to apply for this position please visit:</b> <a href="http://www.aldirecruitment.co.uk">www.aldirecruitment.co.uk</a></p>		

<b>Administration Apprentice</b>	<b>UK Sailing Academy</b>	<b>Ref:</b> VAC001284649
<b>Hours:</b> 40 per week	<b>Wage:</b> £140 per week	<b>Closing Date:</b> 14/08/2017
<p><b>Desired skills:</b> Good ICT skills, strong administrative skills, good organisational skills.  <b>Personal qualities:</b> Self started with good interpersonal and communication skills, friendly and pleasant, highly motivated, attention to detail, a love of all things on the water!  <b>Qualifications required:</b> Good levels of English, Maths and ICT required.</p>		
<p><b>For further details and to apply for this position please visit:</b> <a href="http://www.gov.uk/apply-apprenticeship">www.gov.uk/apply-apprenticeship</a></p>		

<b>Social Media and Marketing Apprentice</b>	<b>CrossFit Valentis</b>	<b>Closing Date:</b> 11/08/2017
<b>Hours:</b> 30 hours per week Monday to Friday	<b>Wage:</b> £105 per week	
<p><b>Desired skills:</b> To be comfortable with video editing, to be competent using Facebook, Instagram, and snapchat, good communication skills, good organisation skills. This role will mostly consist of filming and editing, therefore knowledge of various editing software is a bonus but not essential as basic training would be provided.  <b>Personal qualities:</b> Highly motivated, enthusiastic, creative with strong work ethic,  <b>Qualifications required:</b> GCSE grade D or above in English and Maths (or equivalent).  <b>PLEASE NOTE THAT:</b> As per of the application process you are required to create a 45-60 second video based on something that educates people. You have the flexibility to in how you film and edit the video using whichever equipment you like, this will enable measurement of individual applicants creativity and effort levels.</p>		
<p><b>For further details and to apply for this position please visit:</b> <a href="http://www.isleofwightjobs.com">www.isleofwightjobs.com</a></p>		

# LOCATION: COWES

<b>Data Support Apprentice</b>	<b>Peto LTD</b>	<b>Closing Date:</b> 11/08/2017
<b>Hours:</b> 37.5 hours per week Monday to Friday	<b>Wage:</b> £131 per week	
<b>Desired skills:</b> Confident in using Microsoft Office, excellent communication and organisation skills, and the ability to manage changing priorities working to deadlines.		
<b>Personal qualities:</b> Reliable, willing to learn, pro-active and prepared to use initiative, an interest in software development,		
<b>Qualifications required:</b> GCSE grade C or above in English and Maths (or equivalent)		
<b>For further details and to apply for this position please visit:</b> <a href="http://www.isleofwightjobs.com">www.isleofwightjobs.com</a>		

# LOCATION: FRESHWATER

<b>Rapanui</b>
<b>Programme Apprentice</b> – Love solving problems? We're looking for self-motivated, responsible applicants who are passionate about coding and who want to get the career started. This fast track training programme has so far taken 5 young individuals into full time professional programming careers at Rapanui. Applicants should have GCSEs of C or above in Maths, English and IT. A basic acquaintance with HTML, CSS and any server-side language at hobbyist level are required. Basic knowledge in PHP / MySQL would be very helpful to get off to a fast start.
<b>Customer Support Apprentice</b> - This fast growing business is expanding, and our support team is looking for a bright, chatty personality with a sharp focus on task completion to join our friendly customer service team. Excellent written English, conversational skills, relationship building are essential. The outcome, providing the applicant can bring a consistent can-do attitude and willingness to learn, will find our training in adapting skills to a high tech business environment leads to a full time salaried position our team after 12 months, with fast-track progression opportunities. If you're an organised and charismatic young person that loves a challenge and is excited about helping people on a daily basis, this is a great opportunity.
<b>For further details or to apply, please visit</b> <a href="http://www.rapanuiclothing.com/jobs">www.rapanuiclothing.com/jobs</a>

# LOCATION: ISLANDWIDE

<b>Apprentice Retail Travel Services</b>	<b>Hays Travel Ltd</b>	<b>Ref:</b> VAC001155201 (Newport) VAC001155235 (Shanklin)
<b>Hours:</b> 37½ per week	<b>Wage:</b> £6,828 per annum	<b>Closing Date:</b> 11/08/2017
<b>Desired skills:</b> We are looking for people who have good communication and organisational skills with an enthusiasm and a positive approach to working in a customer facing sales environment.		
<b>Personal qualities:</b> You should have a genuine passion for travel, be sociable, enthusiastic and helpful with a real commitment to learning about the business.		
<b>Qualifications required:</b> Ideally, we look for GCSE (or equivalent) grades A – C including Maths and English however as you will be continuing your education with us, an opportunity through the functional skills unit of the Apprenticeship will be an option to achieve the equivalent grades if you don't already possess these grades. It would also be quite useful if you are well travelled or have a qualification relevant to the industry however, this is not essential.		
<b>For further details and to apply for this position please visit:</b> <a href="http://www.gov.uk/apply-apprenticeship">www.gov.uk/apply-apprenticeship</a>		

# LOCATION: LAKE

<b>Apprentice Vehicle Fitter</b>	<b>Island Tyre Co Ltd</b>	<b>Ref:</b> VAC001181126
<b>Hours:</b> 40 per week	<b>Wage:</b> £140 per week	<b>Closing Date:</b> 21/08/2017
<p><b>Desired skills:</b> You should be a good communicator, practical, able to work in a busy fast moving environment.</p> <p><b>Personal qualities:</b> You should be able to show attention to detail and focussed on quality, able to follow instructions, willing to study, a team player.</p> <p><b>Qualifications required:</b> Ideally you will have, or be predicted to gain, good GCSEs (or equivalent) in English and Maths, although these are not essential. However you must be literate and numerate.</p>		
<p><b>For further details and to apply for this position please visit:</b> <a href="http://www.gov.uk/apply-apprenticeship">www.gov.uk/apply-apprenticeship</a></p>		

# LOCATION: NEWPORT

<b>Care &amp; Support Apprentice</b>	<b>Southern Housing Group</b>	<b>Ref:</b> VAC001234403
<b>Hours:</b> 35 per week	<b>Wage:</b> To be agreed upon appointment	<b>Closing Date:</b> 15/08/2017
<p><b>Desired skills:</b> Empathy, compassion and patience, able to adapt to different working environments, keen to make a positive contribution to improving the quality of life for people with care and/or support needs, commitment to promoting equal opportunities and anti-discriminatory practices.</p> <p><b>Personal qualities:</b> Able to work as part of a team, able to form positive relationships, able to act calmly in emergencies and respond in a professional manner to stressful and challenging behaviour, motivated with a flexible approach to work.</p> <p><b>Qualifications required:</b> Education to GCSE level or equivalent (grade 9-5) in English and Maths. Willing and able to train towards an apprenticeship standard for Adult Care Worker level 2 and attend additional relevant training as required for the duration of the apprenticeship.</p>		
<p><b>For further details and to apply for this position please visit:</b> <a href="http://www.gov.uk/apply-apprenticeship">www.gov.uk/apply-apprenticeship</a></p>		

<b>Business Administration Apprentice</b>	<b>NFU Mutual</b>	
<b>Hours:</b> 30-40 per week	<b>Wage:</b> £4 per hour	<b>Closing Date:</b> 20/08/2017
<p><b>Desired skills:</b> Good keyboard skills, ability to multi task, competency with Microsoft packages and general IT skills, telephone skills, accuracy, sales and customer service skills, good literacy and numeracy skills, good communication skills, ability to work well in a small team, good organisational skills, efficiency.</p> <p><b>Personal qualities:</b> Punctual and hardworking, demonstrate attributes of honesty, integrity, due skill, care and diligence, a desire to learn new skills, calm in a busy working environment, good team player with a great personality, have basic knowledge of insurance.</p> <p><b>Qualifications required:</b> D or above (or equivalent) in English and Maths.</p>		
<p><b>For further details and to apply for this position please visit:</b> <a href="http://www.isleofwightjobs.com">www.isleofwightjobs.com</a></p>		

# LOCATION: NEWPORT

<b>Hairdressing Apprentice</b>	<b>Bijou Hairdressing</b>
<b>Hours:</b> 40 per week to include weekends	<b>Wage:</b> £105-£150
<p><b>Desired skills:</b> Organisational skills, good communication skills, polite telephone manner, ability to work in a timely manner, the ability and willingness to learn.</p> <p><b>Personal qualities:</b> Enthusiasm, reliable, responsible, approachable, efficient, well presented, with the desire, passion and commitment to develop a career in Hairdressing.</p> <p><b>Qualifications:</b> Grade D or above in GCSE English and Maths (or equivalent).</p>	
<p><b>For further details or to apply, please visit:</b> <a href="http://www.isleofwight.com">www.isleofwight.com</a></p>	

<b>Earl Mountbatten Hospice</b>	<b>Closing date:</b> 11/08/2017
<p><b>Health Care Apprentice</b> Based in the John Cheverton Centre at the main Hospice site in Newport, you will work with our clinical care teams carrying out a wide range of duties to support you achieving a level 2 Health and Social Care Apprenticeship Qualification. You will be supervised and mentored by higher trained, experienced and committed staff to care for our day care and respite patients. You will also have the opportunity to work on the ward and with our community teams. This post will be supported by the Isle of Wight College.</p> <p><b>Retail Apprentice</b> Working in our Newport shop you will be supporting KissyPuppy Children's Department. You will carry out a wide range of duties associated with our retail operations including merchandising, pricing, stock rotation and till reconciliation. As part of the Newport shop team you will be managed and mentored by the shop manager to provide high quality service to our customers and achieve a level 2 Retail Apprenticeship Qualification. You will also be given the opportunity to work within our Warehouse and Distribution Centre.</p> <p>We are seeking enthusiastic and motivated candidates, who can demonstrate excellent communication and organisational skills, to work within our busy teams. These roles are offered on a fixed term Apprenticeship Agreement for up to 18 months. Interviews will be held week commencing 1<sup>st</sup> September 2017.</p>	
<p><b>If you wish to find out more about these exciting opportunities please contact the HR department on 01983 217319 or further information is available at:</b> <a href="http://www.iwhospice.org/page/vacancies.html">www.iwhospice.org/page/vacancies.html</a></p>	

<b>Administration Apprentice in Estate Agency</b>	<b>Wage:</b> Basic apprentice rates apply but can be negotiated on age and experience.
<b>Hours:</b> Full time Monday – Friday 10am up to 4pm (a maximum of 2 Saturdays per month many also be required)	<b>Closing date:</b> 18/08/2017
<p><b>Personal qualities:</b> Good attention to detail is essential along with a lively personality to fit in with a mixed team.</p> <p><b>Qualifications required:</b> GCSE grade C in English and Maths (or equivalent)</p>	
<p><b>For further details or to apply, please visit</b> <a href="http://www.isleofwightjobs.com">www.isleofwightjobs.com</a></p>	

# LOCATION: NEWPORT

<b>Wellbeing Apprentice</b>	<b>Isle of Wight Council</b>	
<b>Hours:</b> 37 per week	<b>Wage:</b> £6,734 per annum	<b>Closing Date:</b> 25/08/2017
<p>The Isle of Wight Public Health Department, within the Isle of Wight Council, works to protect and improve the health of the local population. The Isle of Wight Council's Public Health team has developed a service to improve the health and wellbeing of our residents. The Wellbeing Service offers support to residents for up to 1 year to lose weight, stop smoking and increase physical activity. The role will engage with community members to support them to co-deliver local/national initiatives which will impact on the wider community's wellbeing. The role will also undertake research into local and national initiatives to share with the wider team. The role will require some evening and weekend working and regular travel across the Island. Your place of work base will be the Isle of Wight Council, Public Health, Jubilee Stores, Newport. Travel costs incurred for business (excluding study) outside of Jubilee Stores will be paid for by Public Health.</p> <p>Duties will include supporting the:</p> <ul style="list-style-type: none"> <li>- Wellbeing Service Advisors at wellbeing groups (stop-smoking/weight management groups), for example preparing materials for the group and support setting up the group</li> <li>- Wellbeing Advisors with training. For example preparing training materials, setting up the room, inputting survey information</li> <li>- Co-ordination of health walks, for example attend health walks with the Wellbeing Advisors</li> <li>- Triage team working with clients on the telephone and over email</li> <li>- Promotion and evaluation of the Wellbeing Service</li> <li>- Wider Public Health team with mini-projects such as local wellbeing campaigns/researching local events/new initiatives</li> </ul> <p>If you would like to undertake some shadowing to understand what the job will entail please contact Louise Gray, Senior Public Health Practitioner on 01983 821000 ex 6972. For further information or an informal discussion please contact Louise Gray, on 01983 821000 extension 6972.</p>		
<p><b>Please view information pack and complete your job application online at <a href="http://www.iwight.com/jobvacancies">www.iwight.com/jobvacancies</a> or telephone 01983 823134 or email <a href="mailto:callcentre@iow.gov.uk">callcentre@iow.gov.uk</a> if you need further information about applying.</b></p>		

<b>Apprentice Healthcare Assistant</b>	<b>Earl Mountbatten Hospice</b>	
<b>Hours:</b> 37.5 per week	<b>Wage:</b> £131per week	<b>Closing Date:</b> 14/08/2017
<p>Based in the John Cheverton Centre at the main Hospice site in Newport, you will work with the clinical care teams carrying out a wide range of duties to support you achieving an Intermediate Apprenticeship Health and Social Care Qualification. Earl Mountbatten Hospice is seeking enthusiastic and motivated candidates, who can demonstrate excellent communication and organisational skills, to work within their teams. Please note this role is subject to an Enhanced DBS Clearance.</p> <p><b>Qualifications Required:</b> Grade D or above at GCSE (or equivalent level) in English and Maths</p>		
<p><b>For further details and to apply for this position please visit: <a href="http://www.isleofwightjobs.com">www.isleofwightjobs.com</a></b></p>		



# LOCATION: RYDE

<b>Apprentice Support Worker</b>	<b>Westhill IOW Ltd</b>	<b>Ref:</b> VAC001276877
<b>Hours:</b> 30 per week	<b>Wage:</b> £135 per week	<b>Closing Date:</b> 14/08/2017
<p><b>Desired skills:</b> Must be willing to work, days, evenings, weekends and bank holidays, work well as part of a team, good communication skills, outgoing nature.</p> <p><b>Personal qualities:</b> Honest, reliable, friendly, adaptable, enthusiastic.</p> <p><b>Qualifications required:</b> None as training will be provided.</p>		
<p><b>For further details and to apply for this position please visit:</b> <a href="http://www.gov.uk/apply-apprenticeship">www.gov.uk/apply-apprenticeship</a></p>		

<b>Childcare Apprentice</b>	<b>Oakfield CE Primary School</b>	
<b>Hours:</b> 30 - 40 per week	<b>Wage:</b> £3.50 per hour	<b>Closing Date:</b> 20/08/2017
<p><b>Personal qualities:</b> A desire to work with children, punctual and hardworking, good timekeeping and communication skills, willingness to learn new skills, calm in a busy working environment, good team player with a great personality.</p> <p><b>Qualifications required:</b> A good level of literacy and numeracy is required for this role.</p>		
<p><b>For further details and to apply for this position please visit:</b> <a href="http://www.isleofwightjobs.com">www.isleofwightjobs.com</a></p>		

<b>Hairdressing Apprentice</b>	<b>Level Hair and Beauty</b>	
<b>Hours:</b> up to 40 per week	<b>Wage:</b> £3.50 per hour	
<p><b>Desired skills:</b> Organisational skills, telephone skills, good communication skills, ability to work in a timely manner and a willingness to learn.</p> <p><b>Personal qualities:</b> Enthusiasm, personable, approachable, efficient, well presented with a passion and commitment to develop a career in Hairdressing.</p> <p><b>Qualifications required:</b> Grade D or above in GCSE English and Maths (or equivalent).</p>		
<p><b>For further details and to apply for this position please visit:</b> <a href="http://www.isleofwightjobs.com">www.isleofwightjobs.com</a></p>		

<b>Business Administration Apprentice</b>	<b>Separator Spares</b>	
<b>Hours:</b> Full time	<b>Wage:</b> £131.25 per week	
<p><b>Desired skills:</b> Organisational skills, telephone skills, good communication skills, competent IT skills, attention to detail, able to work to your own initiative, well presented and responsible.</p> <p><b>Personal qualities:</b> Enthusiasm, honesty, reliable, good time keeper, friendly, polite, respectful and patient</p> <p><b>Qualifications required:</b> Grade C or above in GCSE English and Maths (or equivalent).</p>		
<p><b>For further details and to apply for this position please visit:</b> <a href="http://www.isleofwightjobs.com">www.isleofwightjobs.com</a></p>		

<b>Apprentice Support Worker</b>	<b>Westhill</b>	
<b>Hours:</b> Full time	<b>Wage:</b> £135.00 per week	
<p><b>Desired skills:</b> Must have an outgoing nature, good communication skills, work well in a team, and be willing to work days, evenings, weekends and bank holidays.</p> <p><b>Personal qualities:</b> Enthusiasm, honesty, reliable, friendly, and adaptable.</p>		
<p><b>For further details and to apply for this position please visit:</b> <a href="http://www.isleofwightjobs.com">www.isleofwightjobs.com</a></p>		

# LOCATION: RYDE

<b>Apprentice Support Worker</b>	<b>Esplanade House</b>
<b>Hours:</b> Part time	<b>Wage:</b> £105.00 per week
<b>Desired skills:</b> Able to work as part of a team as well as unsupervised, willing to undertake training, good communication skills, and good timekeeping.	
<b>Personal qualities:</b> Enthusiasm, reliable, caring, a flexible approach to work, and committed to wanting to enhance the life of people with learning difficulties.	
<b>Qualifications required:</b> None full training will be provided.	
<b>For further details and to apply for this position please visit:</b> <a href="http://www.isleofwightjobs.com">www.isleofwightjobs.com</a>	

# LOCATION: SANDOWN

<b>Store Apprentice</b>	<b>Aldi</b>	<b>Wage:</b> £5.52 per hour to £8.02 per hour
It's a really fast paced environment. The team is fairly small, so if you're not contributing it will soon show. And you get to learn something new every day in a company that thrives on being different. As someone who wants to get stuck in and make things happen, you'll find all that adds up to an exciting challenge. And since there's always loads of support from everyone around you, ranging from the management team to other store assistants, you'll never feel like you're struggling. Balancing theory with practical store work, you'll be expected to work hard and to put some real effort in each day. But it's very rewarding, the time will zoom by and the prospects for a brilliant future have probably never been better, with new Aldi stores opening all the time.		
<b>For further details and to apply for this position please visit:</b> <a href="http://www.aldirecruitment.co.uk">www.aldirecruitment.co.uk</a>		

<b>Apprentice Chef</b>	<b>Flanagan's</b>	
<b>Hours:</b> 32 per week	<b>Wage:</b> £5.00 per hour	<b>Closing Date:</b> 14/08/2017
<b>Desired Skills:</b> Exceptional cleanliness & hygiene standards, Clear verbal communication skills, Ambition and drive, A good palate and personal interest in food & flavours, Previous experience in hospitality would be a bonus but not necessary.		
<b>For further details and to apply for this position please visit:</b> <a href="http://www.isleofwightjobs.com">www.isleofwightjobs.com</a>		

<b>Benefits New Claims Apprentice</b>	<b>Isle of Wight Council</b>	
<b>Hours:</b> 37 per week	<b>Wage:</b> £6,734 per annum	<b>Closing Date:</b> 25/08/2017
The Isle of Wight Council's Benefits Services section is currently seeking a successful candidate for the above vacancy. You must be flexible and able to work accurately and to deadlines in a performance driven environment. Duties include the checking of personal and financial information received from benefit claimants, the Department of Works & Pensions and from other agencies, and after training you will be required to process information relating to benefit claims.		
<b>For further details and to apply for this position please visit:</b> <a href="http://www.iwight.com/jobvacancies/">www.iwight.com/jobvacancies/</a>		

# LOCATION: VENTNOR

<b>Front of House Apprentice</b>	<b>The Royal Hotel</b>
<b>Hours:</b> 30 - 40 per week	<b>Wage:</b> £3.50 per hour
<p><b>Desired skills:</b> Good communication skills, be ambitious, motivated and enthusiastic, be practical.</p> <p><b>Personal qualities:</b> Calm in a busy environment, well presented with good hygiene, good team player with great personality, punctual and hardworking, keen desire to start a career within hospitality.</p> <p><b>Qualifications required:</b> No formal qualifications are required, however a good level of literacy and numeracy is preferable.</p>	
<p><b>For further details or to apply, please visit <a href="http://www.isleofwightjobs.com">www.isleofwightjobs.com</a></b></p>	

<b>Waiter/ Kitchen Apprentice</b>	<b>Besty and Spinky's</b>
<b>Hours:</b> 30 - 40 per week	<b>Wage:</b> £3.50 per hour
<p><b>Personal qualities:</b> Punctual and hardworking, calm in a busy environment, well presented with good personal hygiene, and a good team player with a great personality.</p> <p><b>Qualifications required:</b> GCSE grade D in English and Maths (or equivalent)</p>	
<p><b>For further details or to apply, please visit <a href="http://www.isleofwightjobs.com">www.isleofwightjobs.com</a></b></p>	

<b>Apprentice Care Assistant</b>	<b>Ward House</b>	<b>Ref:</b> VAC001273359
<b>Hours:</b> 36 per week	<b>Wage:</b> £126 per week	<b>Closing date:</b> 14/08/2017
<p><b>Desired skills:</b> Good communication skills, team worker, good timekeeping.</p> <p><b>Personal qualities:</b> Caring, willing to learn, enthusiastic, committed to completing the apprenticeship.</p> <p><b>Qualifications required:</b> None as full training will be provided.</p>		
<p><b>For further details or to apply, please visit <a href="http://www.gov.uk/apply-apprenticeship">www.gov.uk/apply-apprenticeship</a></b></p>		

<b>Apprentice Front of House Person</b>	<b>The Hambrough</b>
<p>Permanent opportunity available after the successful completion of your apprenticeship. This is the ideal opportunity if you are looking to kick start your career in the Hospitality industry. We are looking for an enthusiastic, well presented, polite and hardworking individual who shows a strong drive to work in a fine dining restaurant, bar and occasionally on reception, giving you a good understanding of working within a popular high-end establishment. You will be required to work evenings and weekends therefore, it is important that you are available to cover these shifts. Closing date 24<sup>th</sup> August 2017.</p>	
<p><b>If this opportunity sounds right to you, we would love to hear from you! Please apply by visiting <a href="http://www.isleofwightjobs.com">www.isleofwightjobs.com</a></b></p>	

<b>Apprentice Kitchen Assistant</b>	<b>The Hambrough</b>
<p>Permanent opportunity available after the successful completion of your apprenticeship. This position is a fantastic starting point for a passionate and dedicated chef who is just starting out. You will need to be willing to work in a busy kitchen environment where you will work closely alongside the Head Chef. You will be required to work evenings and weekends therefore, it is important that you are available to cover these shifts. Closing date 24<sup>th</sup> August 2017.</p>	
<p><b>If this opportunity sounds right to you, we would love to hear from you! Please apply by visiting <a href="http://www.isleofwightjobs.com">www.isleofwightjobs.com</a></b></p>	

## TRAINEESHIP VACANCIES

[www.gov.uk/find-traineeship](http://www.gov.uk/find-traineeship)

Please visit the above website for further information on these vacancies and how to apply.  
You will need an e-mail address to register on this site.

Traineeships help unlock your great potential and give you the work preparation training, Maths and English and work experience needed to get an Apprenticeship or other job.

### LOCATION: NEWPORT

Traineeship in Retail	British Heart Foundation Sales Limited	Ref: VAC001149523
		<b>Closing Date:</b> 30/11/2017
<b>Desired skills and qualities:</b> Good communicator, interest in fashion, books or music useful but not essential, good team player, friendly with a desire to help and learn, enjoy working in a team, enjoy meeting new people.		
<b>For further details and to apply for this position please visit:</b> <a href="http://www.gov.uk/find-traineeship">www.gov.uk/find-traineeship</a>		

Traineeship in Warehousing	British Heart Foundation Sales Limited	Ref: VAC001149505
		<b>Closing Date:</b> 30/11/2017
<b>Desired skills and qualities:</b> To be fit and healthy due to the manual handling aspect of the role, be an organised person, work well within in a team, friendly with a desire to help and learn, enjoy working in a team, enjoy meeting new people.		
<b>For further details and to apply for this position please visit:</b> <a href="http://www.gov.uk/find-traineeship">www.gov.uk/find-traineeship</a>		

### LOCATION: RYDE

Traineeship in Retail	British Heart Foundation Sales Limited	Ref: VAC001150154
		<b>Closing Date:</b> 30/11/2017
<b>Desired skills and qualities:</b> Good communicator, interest in fashion, books or music useful but not essential, good team player, friendly with a desire to help and learn, enjoy working in a team, enjoy meeting new people.		
<b>For further details and to apply for this position please visit:</b> <a href="http://www.gov.uk/find-traineeship">www.gov.uk/find-traineeship</a>		

Traineeship Receptionist	Waterside Pool	Ref: VAC001293223
		<b>Closing Date:</b> 30/11/2017
<b>Desired skills and qualities:</b> Good timekeeper, reliable, knowledge of IT, basic grades in English and Maths, people skills, friendly, an interest in swimming, willing to learn and take instruction, and honest.		
<b>For further details and to apply for this position please visit:</b> <a href="http://www.gov.uk/find-traineeship">www.gov.uk/find-traineeship</a>		

# LOCATION: SHANKLIN

Traineeship in Retail	British Heart Foundation Sales Limited	Ref: VAC001150153
		<b>Closing Date:</b> 30/11/2017
<b>Desired skills and qualities:</b> Good communicator, interest in fashion, books or music useful but not essential, good team player, friendly with a desire to help and learn, enjoy working in a team, enjoy meeting new people.		
<b>For further details and to apply for this position please visit:</b> <a href="http://www.gov.uk/find-traineeship">www.gov.uk/find-traineeship</a>		



## Royal Yacht Squadron Isle of Wight Foundation

**Maritime Careers Fair.**

**Thursday 28<sup>th</sup> September 2017 1 – 7 p.m.**

The Royal Yacht Squadron's charitable foundation is once again organising a Maritime Industry Careers Fair at the Royal Yacht Squadron in Cowes. Last year's fair was very successful and was attended by nearly 300 students and jobseekers.

This year we are hosting over 40 employers and training establishments from the maritime world, ranging from local employers to multi-national companies. There will be an opportunity to visit the Royal Navy's P2000 moored in the RYS Haven, along with the RNLI's Atlantic class vessel, the Police Marine Unit, Redesign's work boat and a sailing boat from UKSA.

Aspects of the marine world covered by the exhibitors include amongst others: boat-building, engineering, ferries, coastguards, the Royal Navy, harbour management, catering, ship-broking, shipping, insurance, water-sports, tall ships, super-yachts, off-shore energy support, IT, technical and electrical, ranging from the Royal Navy and Princess Cruises to Spinlock, Vestas and Vikoma.

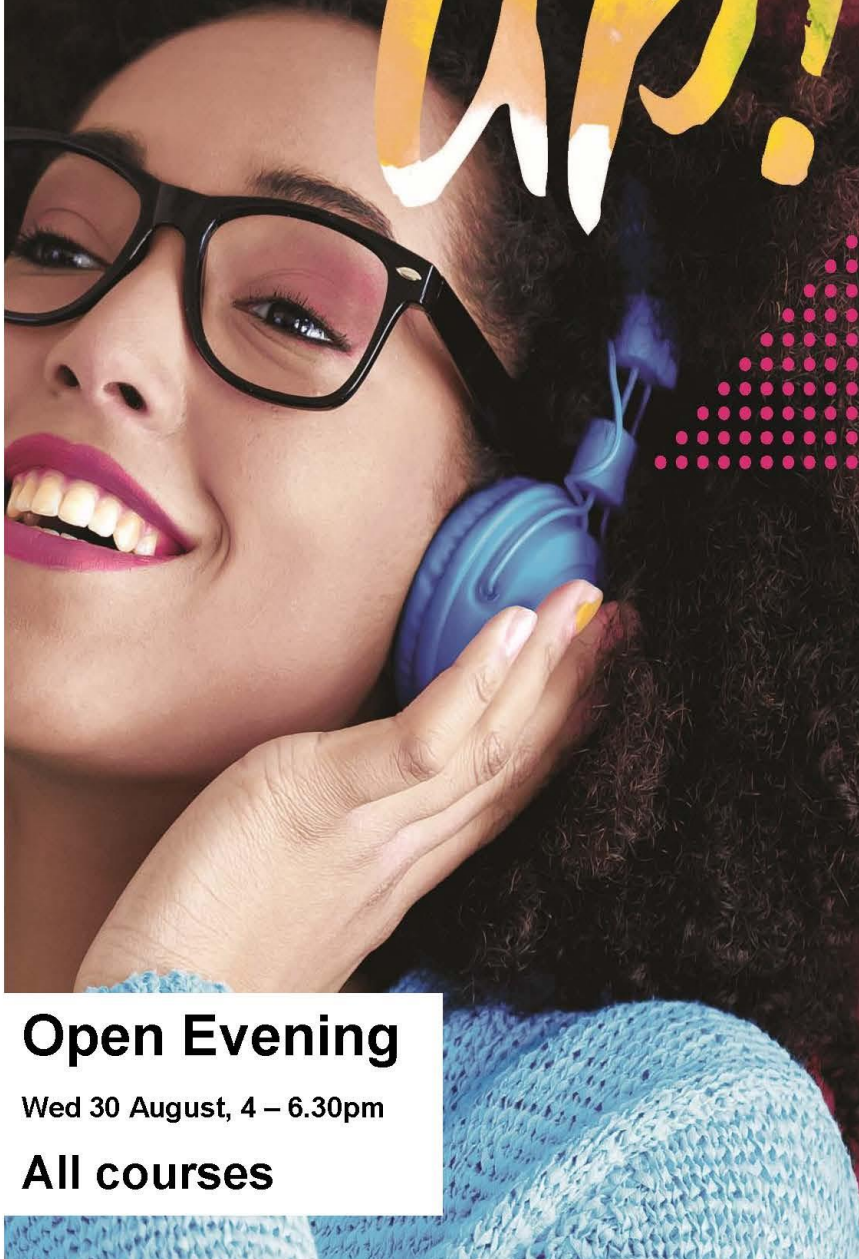
Comments from last year's successful fair stated that the event had a totally different feel to any other careers events attended because it was fully focused on the industry, so students were already engaged which made the day very rewarding.

We hope to give students and young people an insight into the many possibilities there are for employment working in an Island environment such as ours. We also wish to raise awareness of the financial help that the RYS IW Foundation may be able to offer young Isle of Wight people seeking to train to follow some of these careers.

Doors will open from 1 p.m. to 7 p.m. and we look forward to seeing you there.

Further details and registration may be found at [www.rysfoundation.org.uk](http://www.rysfoundation.org.uk).

# LISTEN UP!



**IW College is open throughout the summer for information and help with applications:**

**Mon – Thurs 0830-1700  
Fri 0830 - 1600**

The Isle of Wight College offers Post 16 education options, including routes to university, as well as great facilities and a friendly working environment.

Vocational courses.  
Apprenticeships.  
Traineeships.  
Higher education.  
(University courses).

High quality teaching.  
Great facilities.  
Student support.  
Progression to work, further education and uni.  
Widest range of courses.  
Industry links.

**Open Evening**

Wed 30 August, 4 – 6.30pm

**All courses**

**Don't follow the crowd.  
March to your own beat.**

THE ISLE OF WIGHT  
**college**

Apply now for September

[www.iwcollege.ac.uk](http://www.iwcollege.ac.uk) 01983 526631



# ARE YOU AGED 16-24?

ENROL TODAY + START YOUR  
CAREER NOW OR IN SEPTEMBER



**APPRENTICESHIPS**

**TRAINEESHIPS**

**& FULL-TIME COURSES**

GET IN • GO FAR • WITH HTP

- PROFESSIONAL COOKERY
- BUSINESS
- HEALTH + SOCIAL CARE
- CUSTOMER SERVICE
- HOSPITALITY + TOURISM
- SPORTS + FITNESS
- RETAIL + SALES
- CHILDCARE + EDUCATION
- NAILS + BEAUTY
- CLEANING SERVICES

We're the Island's experts in career training and we're **OFSTED Outstanding** in everything we do. Contact us now and make 2017 your career year!

**01983 533926 | [htp.ac.uk](http://htp.ac.uk)**

118-119 St James St. Newport PO30 5HE



Full-time Courses





smart

training and  
recruitment

We've lost count of the number of times we've heard that said by people who just want to show what they can do. That's why we're so passionate about apprentices and about giving them the opportunity to learn and build their future and that includes you.

"All I need is somebody willing to give me a chance."

Become an  
Apprentice  
the Smart way...  
13,000 already have!

Get in touch with your future

Taking advantage of our wide range of Apprenticeship opportunities is as easy as visiting our website, dropping us an email, or giving us a call.

Tel: 0330 088 0888  
E-mail: [info@smarttar.co.uk](mailto:info@smarttar.co.uk)  
Web: [www.smarttar.co.uk](http://www.smarttar.co.uk)

 find us on facebook

 follow us Twitter

Since we opened our doors in 2003, Smart Training and Recruitment has provided apprenticeships in a wide variety of industry sectors.

We employ over 150 experts, working with over 2,500 learners

All our employers recognise the value and benefits of delivering Apprenticeships within the workplace.



Apprenticeships

  
Ofsted  
raising standards  
improving lives

Funded by

  
Skills Funding  
Agency

# Traineeships



## Sectors include:

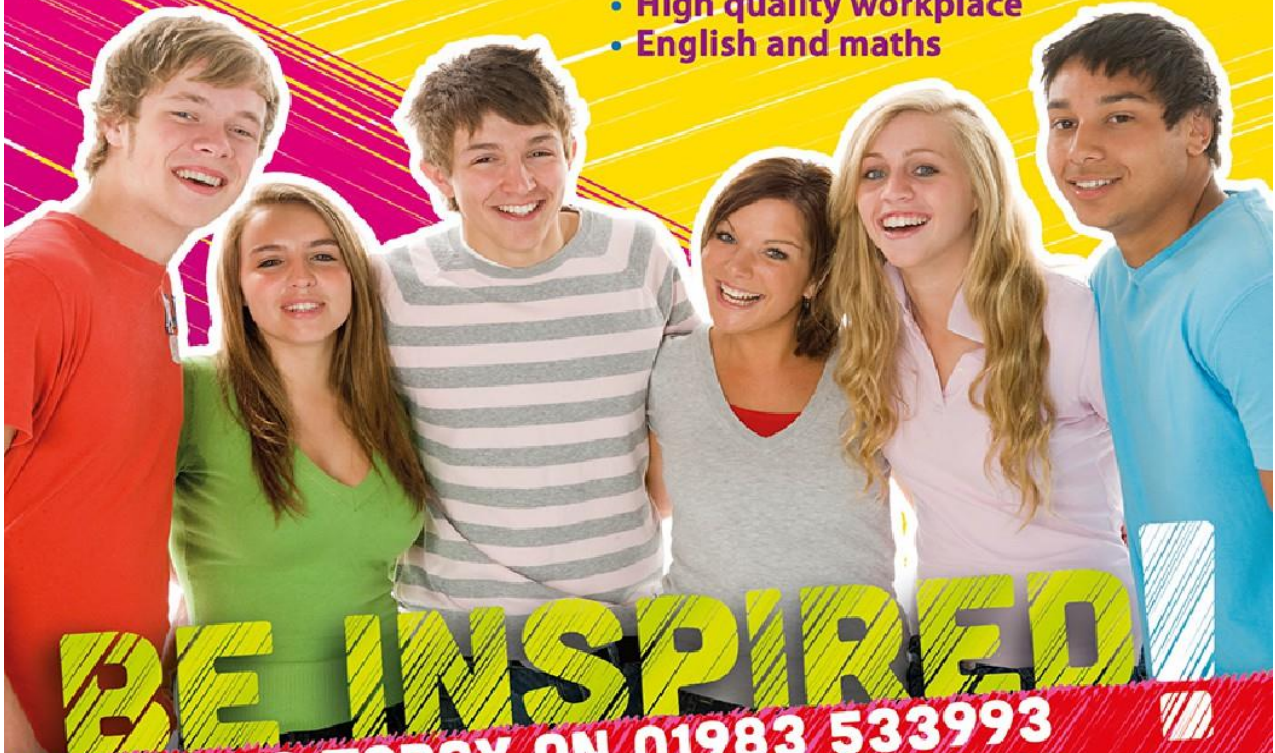
- Health and Social Care
- Customer Service
- Hospitality and Catering
- Hair and Beauty
- Retail and Commercial Enterprise
- Travel and Tourism
- Business Administration
- Childcare



CLC is committed to improving your employability skills to...  
**Kick Start Your Career**

## Traineeships include:

- Travel costs provided
- Weekly allowance\*
- Employability skills
- High quality workplace
- English and maths



**BE INSPIRED!**  
**CALL US TODAY ON 01983 533993**  
**OR EMAIL: INFO@CARELEARNINGCENTRE.CO.UK**  
**WWW.CARELEARNINGCENTRE.CO.UK**

\* 16-18 only

Suitable if you are 16-24 unemployed and have little or no work experience

Island Futures is part of the Isle of Wight Council and reproduces this list of locally available jobs from external sources that have advertised the same within the previous 7 days. The Council cannot verify or warranty any terms of condition offered by the external employers and have no affiliation or association with these employers. The Council accepts no liability however arising from any damage or loss suffered as a result of these adverts or any reliance placed upon them. Further information should be sought direct from the employers using the contact details provided above.